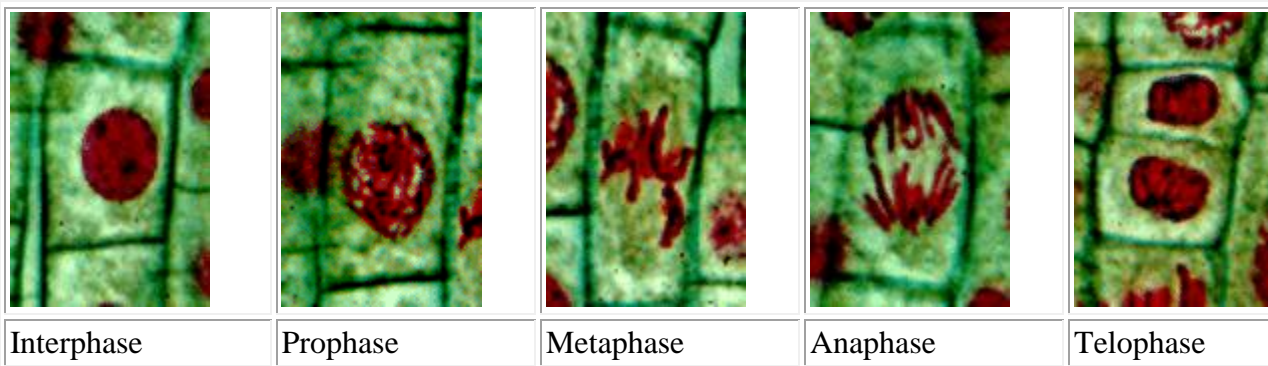


Mitosis-OnLine Lab

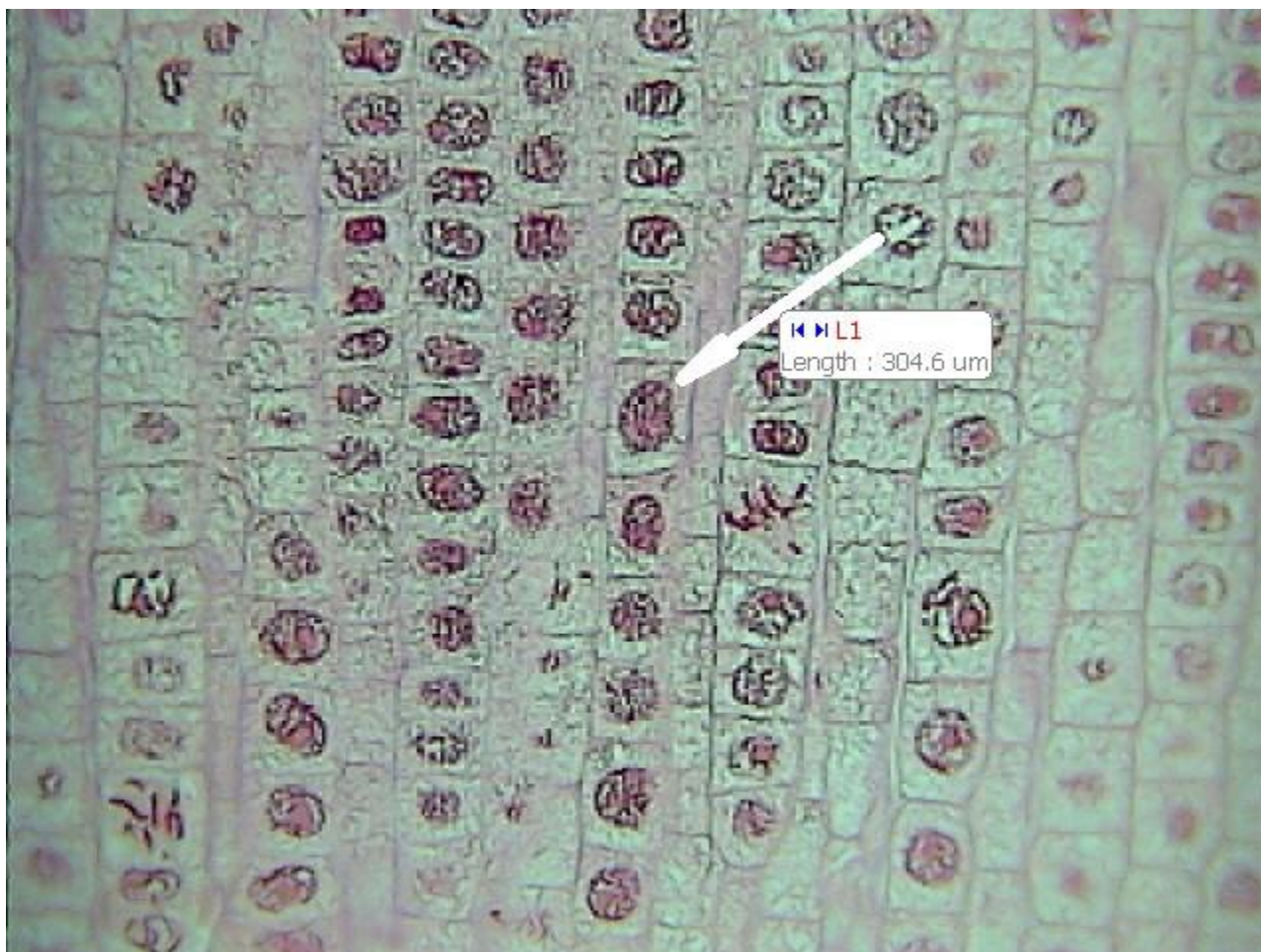
- use in conjunction with the “How Long is Each Phase of Mitosis?” Lab

To help you with the assignment some diagrams and pictures are provided.

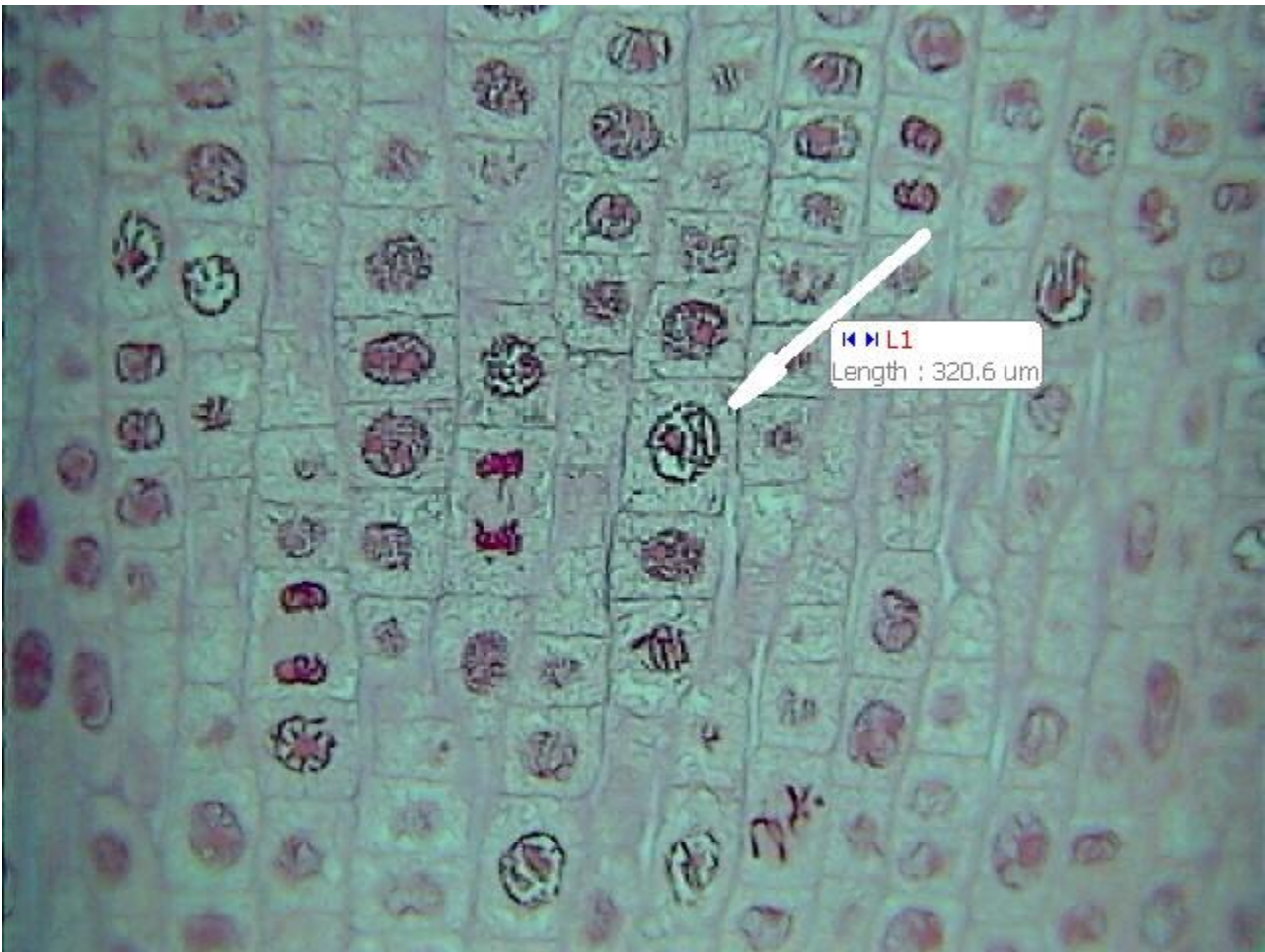


The following pictures are being provided so that you can see what the phases look like in a real slide.

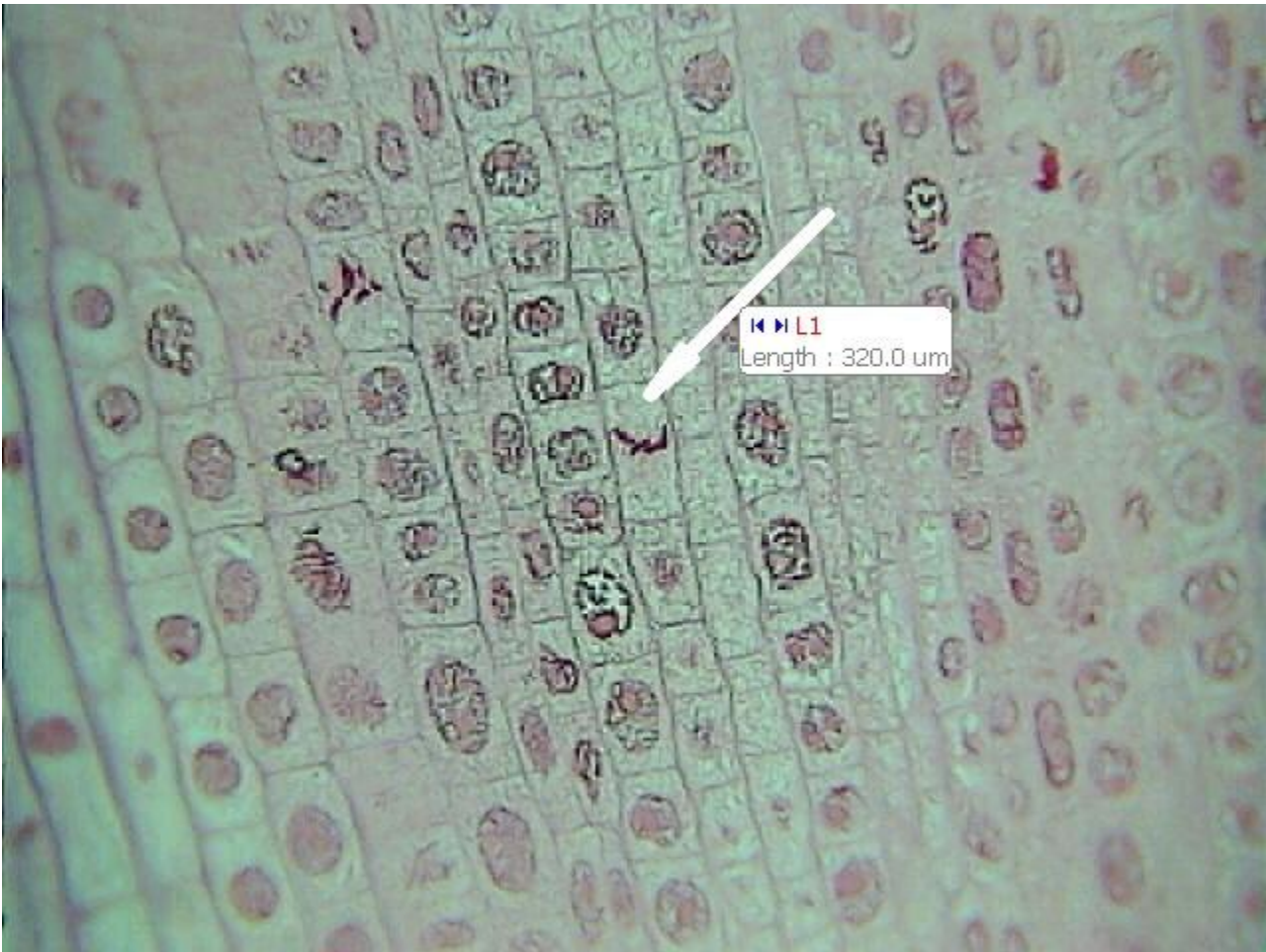
INTERPHASE



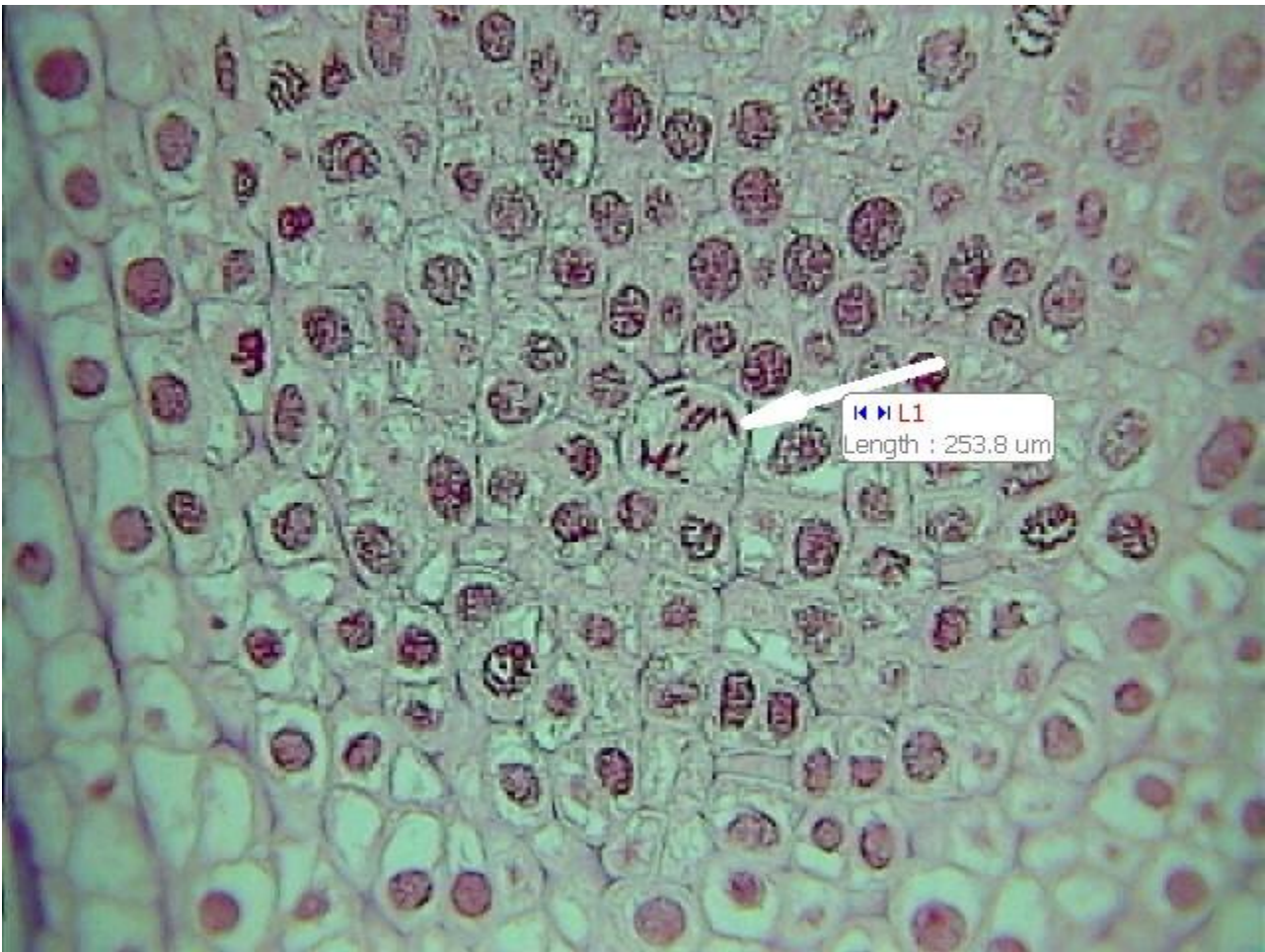
PROPHASE



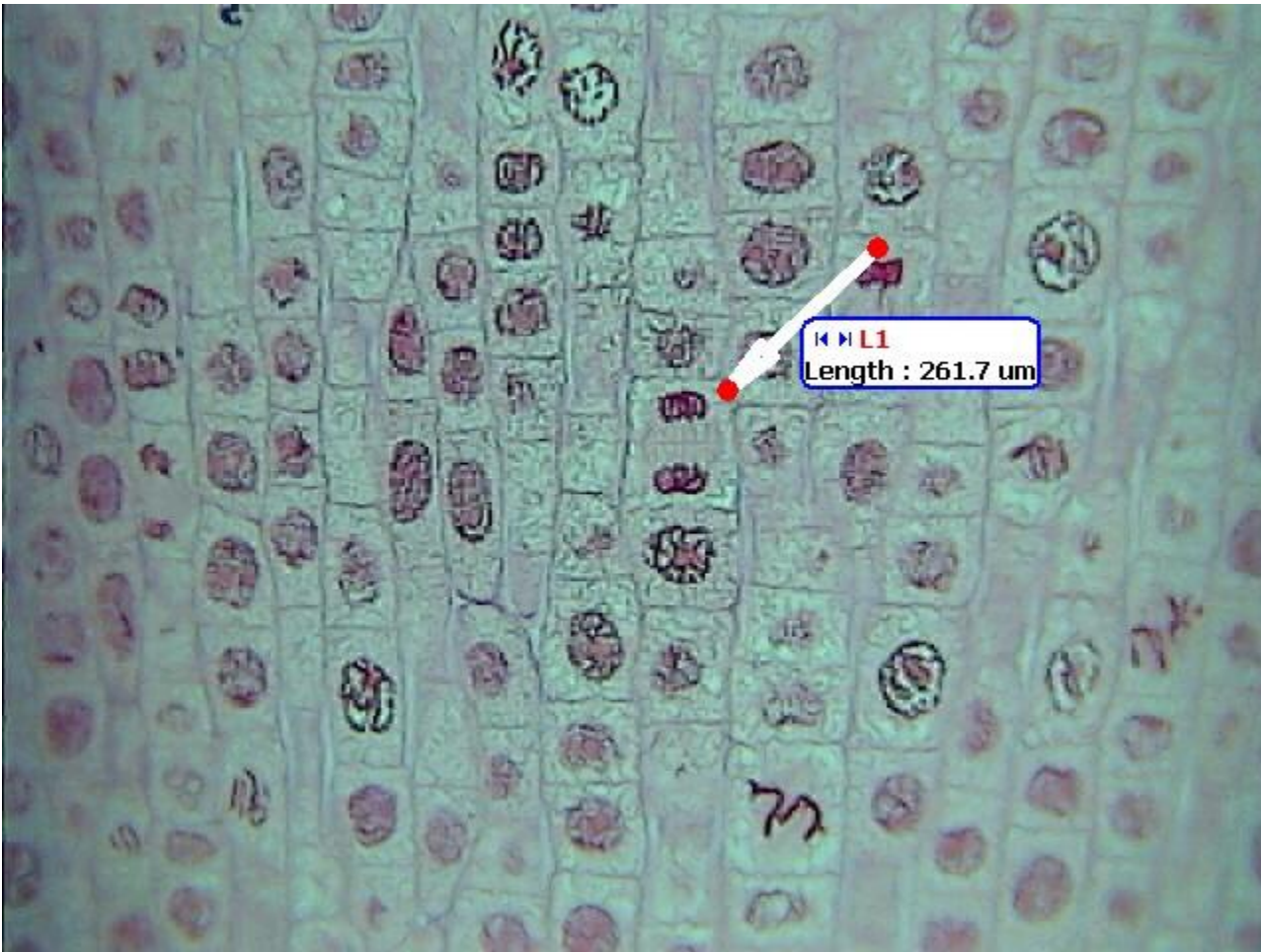
METAPHASE



ANAPHASE

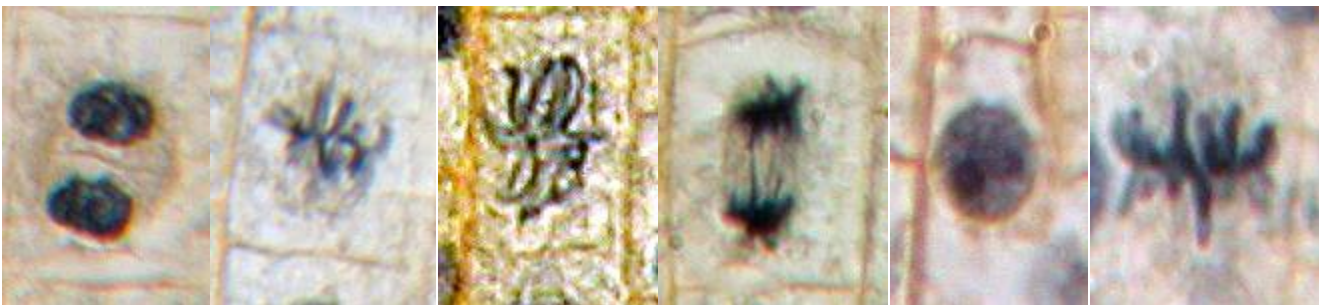


TELOPHASE



LAB

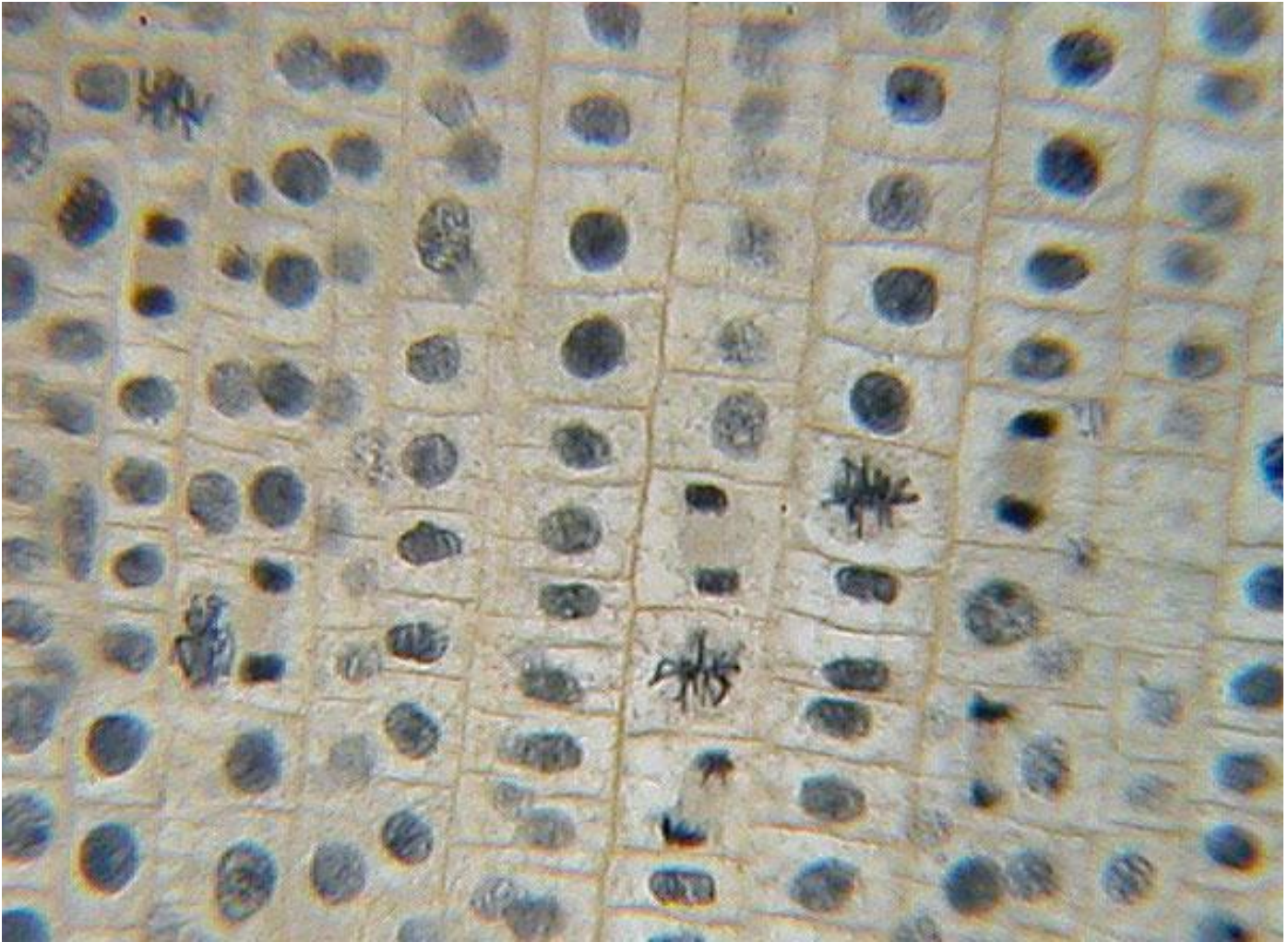
1) Identify the phase in each of the "slides"



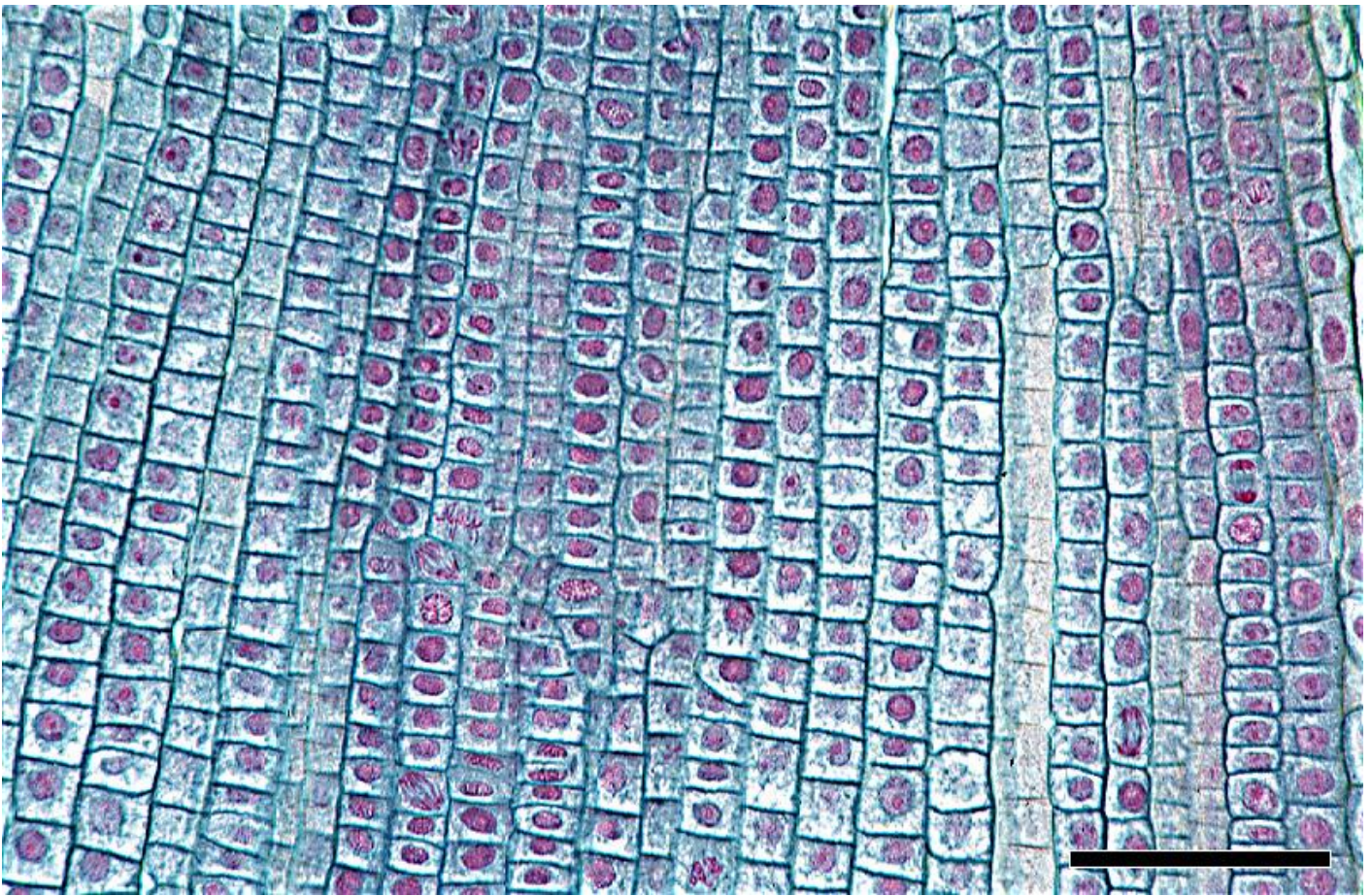
2) Using the slides below pick whole rows and identify ALL the cells in that row recording your data in Data Table #1 of you yellow lab paper.

Count at least 100 cells. The more you count, the better your ratios will come out.

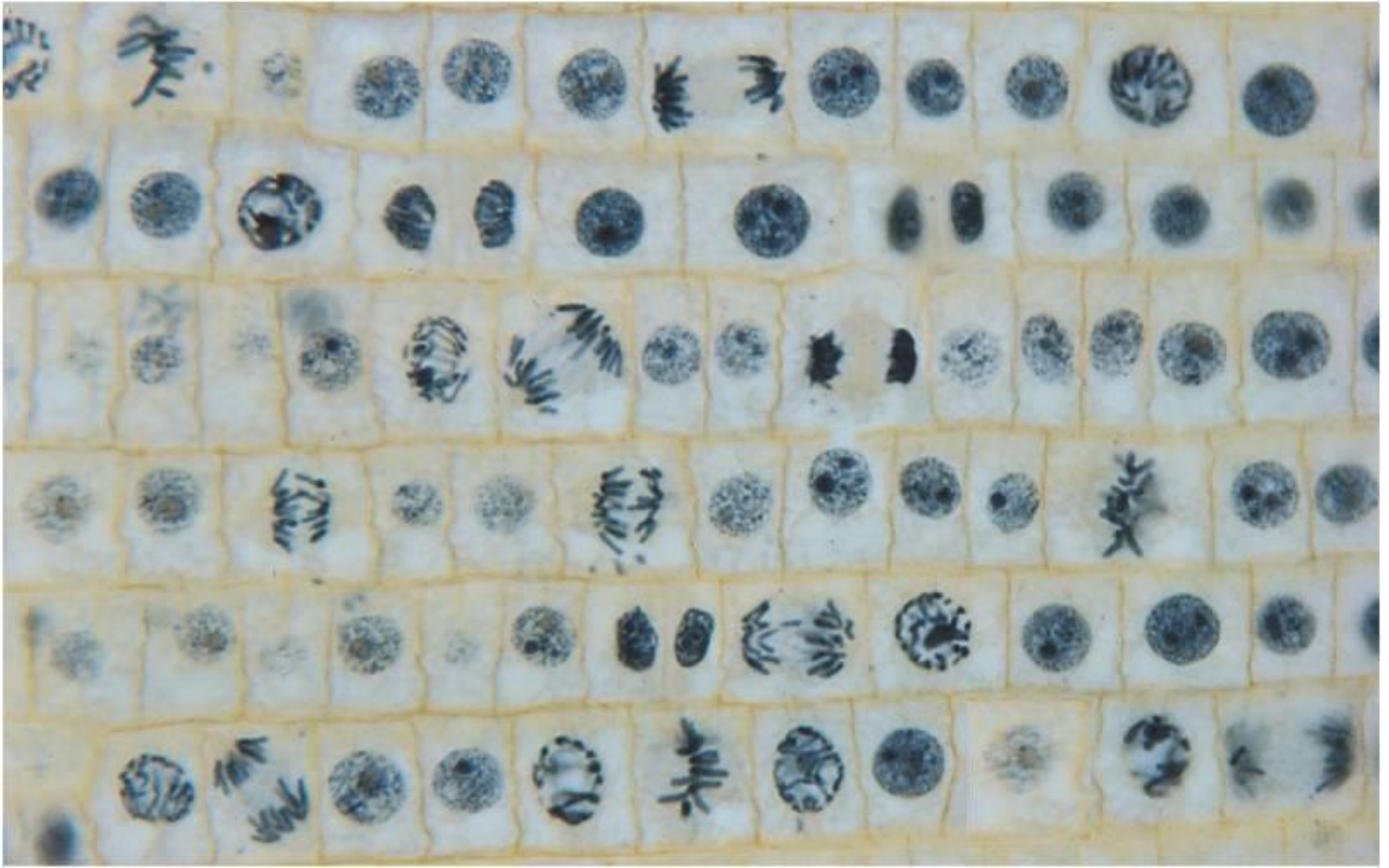
First "Area/Slide":



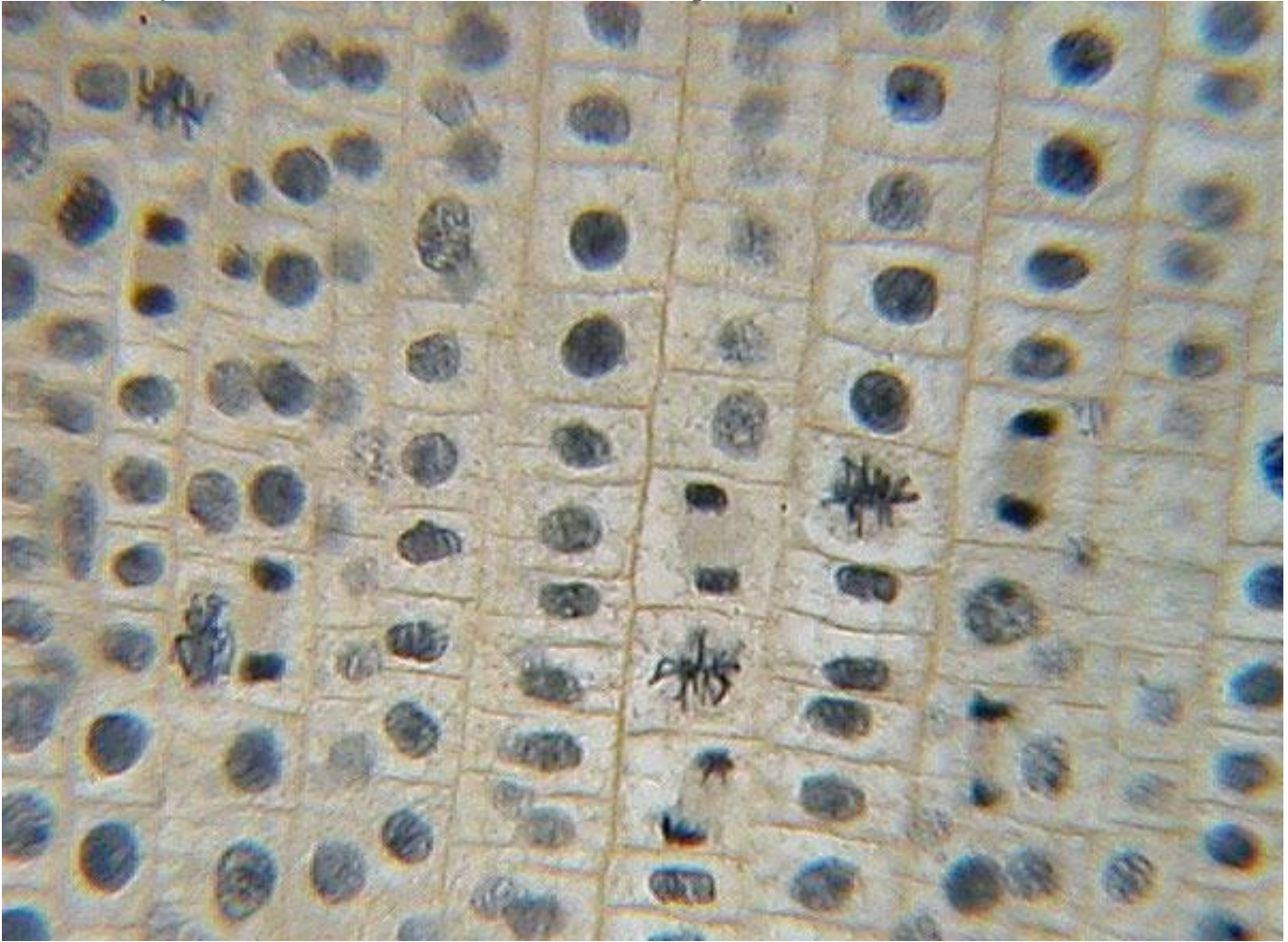
Second "Area/Slide":



Third "Area/Slide":



Extra slide (in case you don't yet have 100 cells to count). It's OK to add this data to another "area/slide" because it is just the TOTAL number of cells that is important.



Finish answering the questions on your Mitosis Lab.